

# Alock W

Polycarbonate seal with transparent capsule and coloured anchor. The anchor is pre-assembled with a standard 16cm length 0.81mm stainless steel wire. Other lengths of 25, 30, 39, 50, 79cm are available. The anchor is semi inserted into the capsule to protect against tampering of the locking pins before closure (fake sealing). The numbers are laser printed on both the tab and the anchor. The laser printing of a bar coded seal is on a white background on capsule with matching number on the anchor. Personalisation can be laser marked on capsule.

Laser Printed matching numbers  
on both tab and anchor



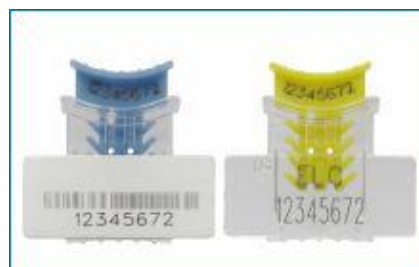
Alock W SLM #028SLM16ST2PC

Laser printed bar code  
on white background of tab  
and matching number on anchor



Alock W CB #028B12816ST2PC

Alock seals  
can also be supplied without  
pre-assembled wire



Alock seals  
mat of 5



## Alock W description

- Material Polycarbonate.
- Transparent capsule allows a quick visualisation of the locking mechanism and numbers of the coloured insert.
- Wire, 2 spiralled, 0.81 diameter, stainless steel, pre-assembled with variable lengths of 13, 16, 25, 30, 39, 50 or 79cm.
- Numbers laser printed on both tab and anchor.
- Bar code laser printed on white background on capsule and matching number on anchor.
- Personalisation laser marked on capsule.
- Multiple locking pins.
- Pre-assembled insert protects tampering of locking pins before closure (fake sealing).
- Closed end locking mechanism protects manipulation of insert.
- Mats of 5.
- Colour of capsule: Transparent.
- Colours of anchor insert. Blue, Yellow, Red Green and Orange. Colour choice subject to quantity required.
- Packing with 16cm wire
  - Carton 5,000 seals
  - Plastic bags 100 seals
  - Size 48x42x420cm
  - Gross weight: 11.50 Kg