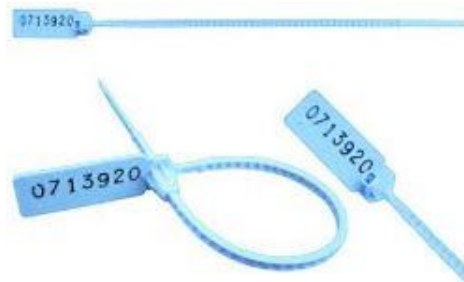


# PULLLOCK C1 & C2

Adjustable length self-locking pull-up seal. Numbers hot stamp, inkjet or plastic in-mould-label. Bar code inkjet directly on seal or laser printed plastic in-mould-label. Plastic in-mould labels are laser printed on reverse side of transparent plastic, for added security and protection, and bonded to seal at time of injection.

## Numbers Hot Stamp



C1NH #060H14PP  
C2NH #060H21PP

## Numbers Inkjet



C1 Inkjet # 060I14PP  
C2 Inkjet # 060I21PP

## Bar code Inkjet



C1 IJCB #060ICB12814PP  
C2 IJCB #060ICB12821PP

## Numbers Plastic In-mould-label



C1 IML Transfer #060RIMLN14PP  
C2 IML Transfer #060RIMLN21PP

## Bar code Plastic in-mould-label



C1 IML Transfer #060RIMLCB114PP  
C2 IML Transfer #060RIMLCB121PP

## Pullock C1 & C2 description

- Material Polypropylene.
- C1 - Overall length 165mm, operational length 80mm, tail 3.23mm x 2.35mm.
- C2 - Overall length 225mm, operational length 140mm, tail 3.23mm x 2.35mm.
- Locking teeth on both sides of tail.
- Mats of 10.
- Numbers hot stamp, inkjet or laser printed plastic in-mould-label.
- Bar code 128C. Inkjet printed directly on seals or laser printed on plastic in-mould-label (IML transfer) Consult on availability of other bar codes.
- For extra identification, personalisation with name or logo is available for quantities over 10,000.
- Colours Blue, Orange, Red, Yellow, Green, Grey, and White. Colour choice subject to quantity required
- Packing details Pullock C1
  - Carton with 5,000 seals
  - Plastic bags with 250 seals
  - Size 36x36x28cm
  - Gross weight 7.360 kg
- Packing details Pullock C2
  - Carton with 5,000 seals
  - Plastic bags with 100 seals
  - Size 46x36x30cm
  - Gross weight 10.2 kg