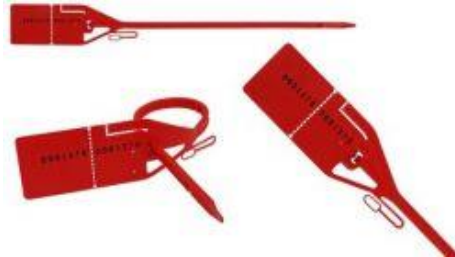


RIPLOCK C3

Adjustable length self-locking pull-up seal, with tear line and optional tear-off receipt. Numbers hot stamped, inkjet, or laser printed on plastic in-mould-label. Bar code inkjet, or laser printed on plastic in-mould-label. Plastic in-mould labels are laser printed on reverse side of transparent plastic, for added security and protection, and bonded to seal at time of injection.

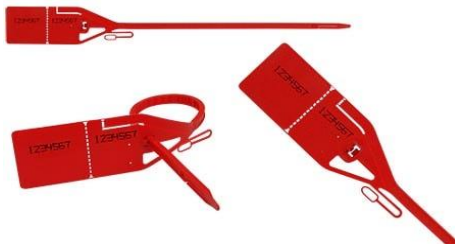
Numbers Hot Stamp



With receipt
C3 NHR #061NHR30PP

Without receipt
C3 NH #061NH30PP

Numbers Inkjet



With receipt
C3 Inkjet #061IR30PP

Without receipt
C3 Inkjet #061I30PP

Bar code Inkjet



With receipt
C3 IJRCB #061IRCB12830PP

Without receipt
C3 IJCB #061ICB12830PP

Numbers Plastic In-mould-label



Without receipt
C3 IML Transfer #061RIMLN30PP

Bar code Plastic in-mould-label



Without receipt
C3 IML Transfer #061RIMLCB130PP

Riplock C3 description

- Material Polypropylene.
- Mats of 8.
- Overall length 333mm.
- Operational length 200mm
- Tail width/thickness 6.5mm x 3.5mm.
- Tear-off tab. No tools necessary for removal.
- Tear-off receipt, optional.
- With or without label holder.
- Numbers hot stamp, inkjet, or plastic in-mould-label
- Bar code 128C inkjet or laser printed on plastic in-mould-label. Consult on availability of other bar codes.
- For extra identification, personalisation with name or logo is available. Subject to quantity required
- Pull-up tool to assist tighter closer.
- Slit on end of tail for pull-up tool.
- Colours: Blue, Red, Orange, Yellow, Green, Grey, and White. Colour choice subject to quantity required.
- Packing details
 - Carton 1,200 seals
 - Plastic bags 80 seals
 - Size 48x42x40cm
 - Gross weight 9 kg
- Pull-up tool #T080

