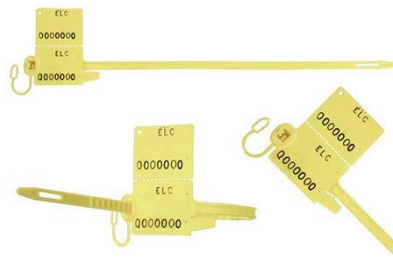


# Securneck 1 & 2

Adjustable length self-locking pull-up seals with tear-line and with or without a detachable receipt. Numbers hot stamp, inkjet or plastic in-mould-label. Bar code, inkjet or plastic In-mould-label. Plastic in-mould labels are laser printed on reverse side of transparent plastic, for added security and protection, and bonded to seal at time of injection.

## Numbers Hot Stamp & Inkjet

Securneck 1  
With tear-off receipt

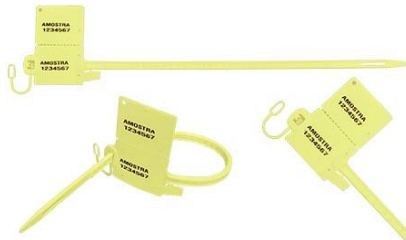


**Hotstamp**  
1NH #081NHPA30PP

**Inkjet**  
Inkjet 081IN30PP

## Numbers

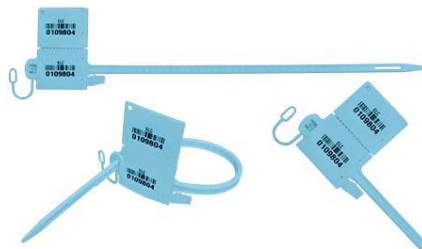
Plastic In-mould-label  
Securneck 1  
With tear-off receipt



IML Transfer #081RIMLAN30PP

## Bar code

Plastic in-mould-label  
Securneck 1  
With tear-off receipt



IML Transfer 128C #081RIMLCB130PP

## Numbers Hot Stamp & Inkjet

Securneck 2  
Without tear-off receipt

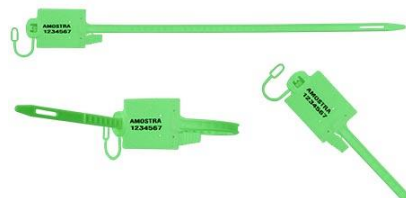


**Hotstamp**  
2NH #082NHA30PP

**Inkjet**  
Inkjet #082I30PP

## Numbers

Plastic In-mould-label  
Securneck 2  
Without tear-off receipt



IML Transfer #082RIMLAN30PP

## Bar code

Plastic in-mould-label  
Securneck 2  
Without tear-off receipt



IML Transfer 128C #081RIMLCB130PP

## Securneck 1 & 2 description

- Material Polypropylene.
- Lengths Securneck 1 & 2
  - Overall 300mm.
  - Operational length 220mm.
  - Tail width/thickness 6.6mm x 3.5mm.
- Numbers Hot stamp, inkjet or plastic in-mould-label.
- Bar code 128C laser printed on plastic in mould label. Minimum order of 10,000 required.
- For extra identification, personalisation with name or logo is available for quantities over 10,000.
- Optional tear-off receipt for Securneck 1
- Tear-off tab for tool-less removal.
- Label holder, optional.
- Gripping prongs on back of seal.
- Pull-up tool to assist tighter closure.
- Opening on end of tail for pull-up tool
- Colours: Blue, White, Red, Green, Grey, Yellow, Orange. Colour choice subject to quantity required.
- Packing Securneck 1
  - Carton 2,000
  - Plastic bags with 100 seals
  - Size 48x42x42cm
  - Gross weight: 14.300 Kg
- Packing Securneck 2
  - Carton 2,000
  - Plastic bags with 100 seals
  - Size 48x42x42cm
  - Gross weight: 10.760 Kg
- Pull-up tool #T080

