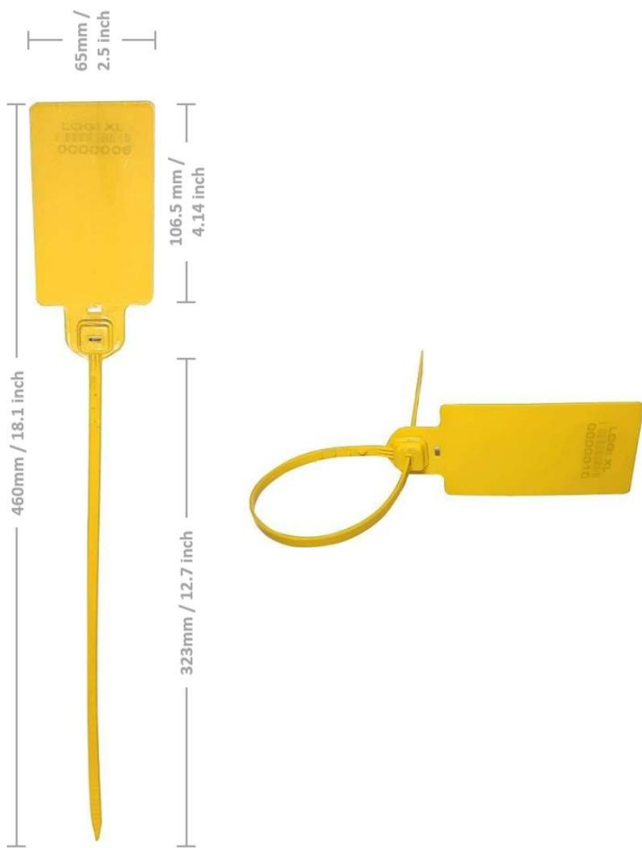




# LOGI - XL

S4S LOGI XL is a high-security adjustable plastic strap seal with a durable polypropylene body and metal clip, ensuring tamper resistance and easy sealing.



## Technical Data



**Material:** PPCP



**Metal Lock:** SS; Ultrasonic welded design shows tampering marks for enhanced security.



**Standard marking:** Laser-engraved company logo, barcode, and 7-digit number.



**Tail:** Smooth, tapering end for easy pull-up



**Integral Metal Clip:** Provides a high level of security

## Features & Benefits



**Cutter Required to Open**



**Food-grade materials**



**Laser Engraving**



**E-Commerce & Courier**



**Logistics**



**Vending Machines**



**Coin-Mail Bags**

## Applications

## Packing



• Carton - 1,000 seals • Packet - 1000 seals • Size: 49x38x35 cm • Gross Weight: 13.750 Kg